

AOMOSUR

MAKE AUTO SAFE



User Manual

Wireless RV Leveling System & Off-Road Inclinometer

Model: AM350PRO

Functional descriptions in this manual are subject to change without notice.

AOMOSUR

Catalog

About AM350PRO	1
Installation of the Transmitter	2
Installation of the Display	3
Calibration	4
Button Application	5~6
RV Mode Transmitter Orientation Setting	7
Off-road Mode Transmitter Orientation Setting	8
RV Mode Display Interface	9
Off-road Mode Display Interface	10
Transmitter and Display Signal Connection	11
Off-road mode vehicle roll Angle and pitch Angle display	12
RV Mode Vehicle Roll Angle Display Area	13
RV Mode Vehicle Pitch Angle Display Area	14
Structure of the Transmitter	15
Parameters	16
FAQ	17
After-sales service	18
FCC Warning	19

Wireless RV Leveling System & Off-Road Inclinometer

Effortlessly monitor tilt angles in real time with dual-mode functionality (RV Leveling: 0-4°, Off-Road: 0-40°) supported by a highly accurate 6-axis gyroscope. Easily portable with magnetic bases and reliable Wireless connectivity, this system ensures precise adjustments and extended battery performance for your adventures.

Dual-Mode Functionality: Seamlessly switch between RV Leveling Mode (0-4°) and Off-Road Mode (0-40°) to monitor tilt angles in real time, ensuring precise adjustments for both RV enthusiasts and off-road adventurers.

Portable Magnetic Installation: Comes with two magnetic bases for easy setup across vehicles. Effortlessly transfer the transmitter between your RV and off-road vehicle as needed, ensuring convenience on every trip.

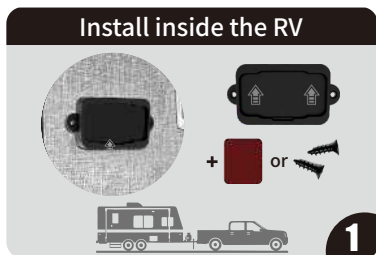
6-Axis Gyroscope Precision: Powered by advanced drone-grade 6-axis technology, it delivers exceptional accuracy in angle measurement, simplifying leveling tasks and enhancing vehicle stability.

Strong Wireless Signal: Features an industrial-grade transmitter with a 150-foot range. Its robust signal penetrates metal RV walls, providing stable, lag-free connectivity for real-time monitoring.

Extended Battery Performance: Built-in rechargeable batteries offer 100 hours of transmitter runtime and 8 hours of monitor use. Includes auto power-saving mode to maximize battery life, reducing interruptions on your journey.

Step 1: Installation of the Transmitter

Install inside the RV



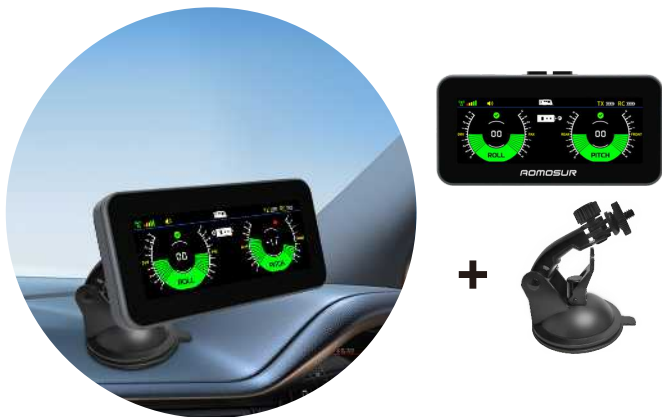
1. Install the transmitter base on the wall using double-sided tape or screws.
2. Attach the transmitter to the base, and installation finished.

Install inside the Car



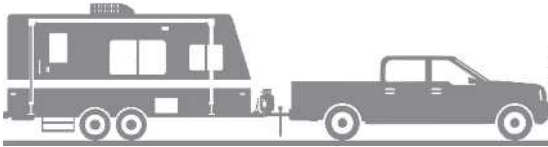
1. Install the transmitter base in the appropriate position inside the car
2. Attach the transmitter to the base, and installation finished.


Step 2: Installation of the Display



Install with the bracket or place it in a position that does not interfere with driving

Step 3: Level Calibration



1. Turn the display and transmitter on until the signal connected 
2. Press the left button to switch RV/Off-road mode
3. Press and hold the left and right buttons for 3 seconds at the same time, and the calibration is done when hear a beep.
(This step requires the RV or car to be parked on level ground ⚠)

Button Application



1. Press the left button to switch RV/Off-road mode
2. Press the 2 buttons at the same time to adjust the brightness
3. Short press the right button to turn on/off
4. Press and hold the right button for 3 seconds to turn on/off the sound



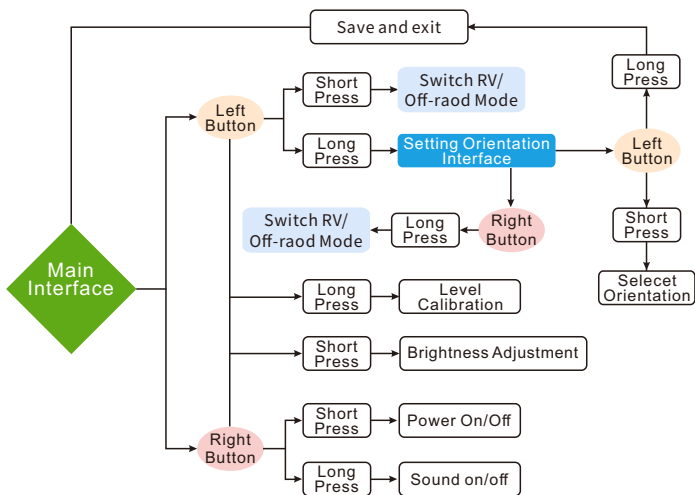
Sound on



Sound off

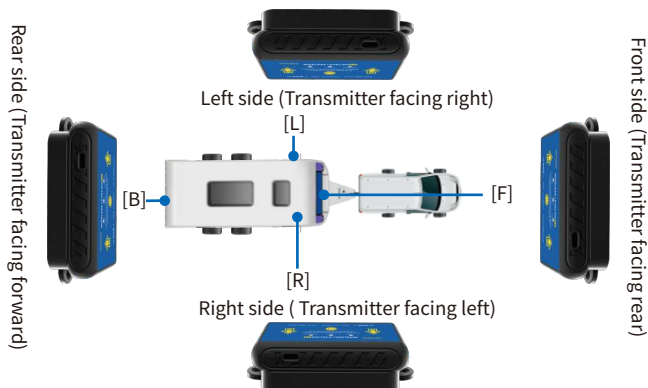


Button Application

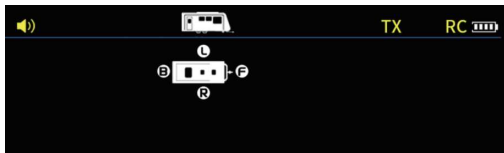


RV Mode Transmitter Orientation Setting

Selecting a suitable location to install the transmitter

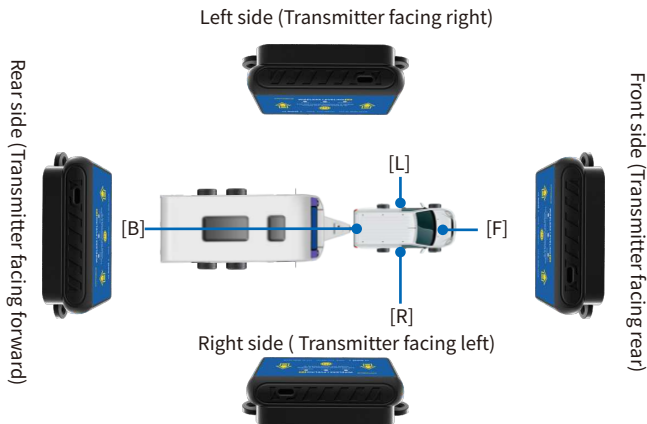


1. Hold down the left button for 3 seconds to enter the orientation setting screen.
2. Hold down the power button for 3 seconds to switch RV/Off-road mode
3. Press the left key to select a direction.
4. Hold down the left key for 3 seconds to save and exit.

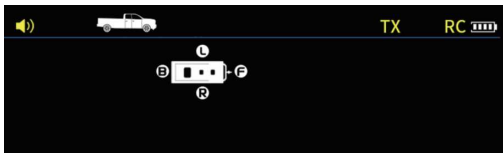


Special reminder: In countries where the driver's seat is on the right side, such as the UK, Australia, and New Zealand, "Passenger's side" and "Driver's side" should be switched.

Off-road Mode Transmitter Orientation Setting

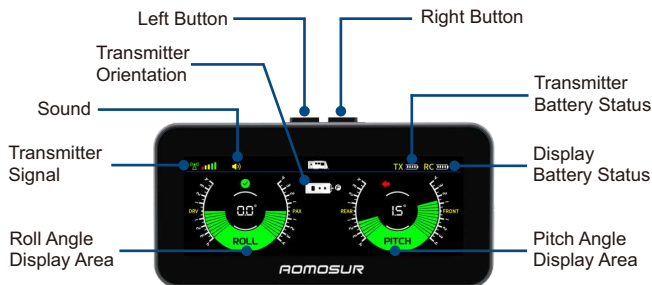


1. Hold down the left button for 3 seconds to enter the orientation setting screen.
2. Hold down the power button for 3 seconds to switch RV/Off-road mode
3. Press the left key to select a direction.
4. Hold down the left key for 3 seconds to save and exit.



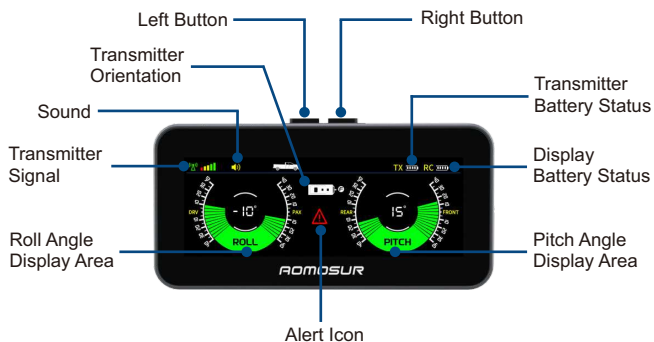
Special reminder: In countries where the driver's seat is on the right side, such as the UK, Australia, and New Zealand, "Passenger's side" and "Driver's side" should be switched.

RV Mode Display Interface



- ① Tilt Angle display range: $\pm 4^\circ$
- ② The minimum display resolution is 0.1° .
- ③ When the inclination angle is less than 0.5° , the system indicates that the RV is leveled.

Off-road Mode Display Interface



- ① Tilt Angle display range: $\pm 40^\circ$
- ② The minimum spacing is accurate to 1°
- ③ When the vehicle's tilt angle exceeds 20° , a warning alarm will be activated; if it exceeds 30° , an emergency alarm will be triggered.

Transmitter and Display Signal Connection

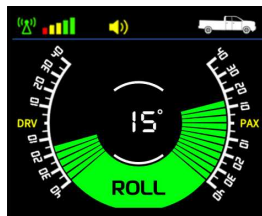
1. Short press the yellow button in the mid to turn on the transmitter, the power indicator shows red for power on; short press the right button to turn on the display.



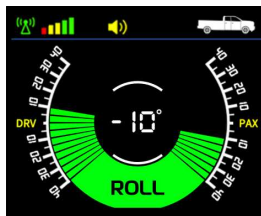
2. Wait a few seconds for auto connection after powering on.



Off-road Mode Vehicle Roll Angle Display Area

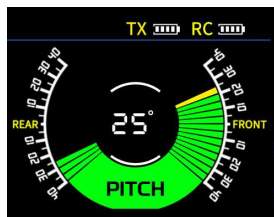


Vehicle leaning to the left(DRV):
Tilt to the left

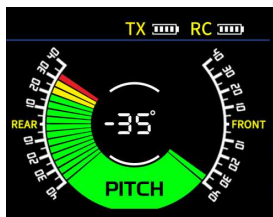


The vehicle tilted to the right(PAX):
Tilt to the right

Off-road Mode Vehicle Pitch Angle Display Area

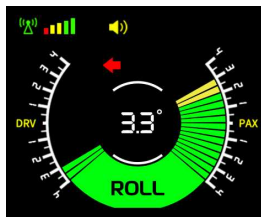


The vehicle tilted to the rear
Tilt backward

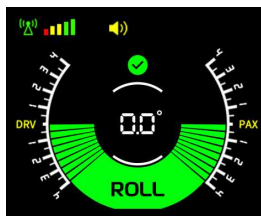


The vehicle tilted to the front
Tilt forward

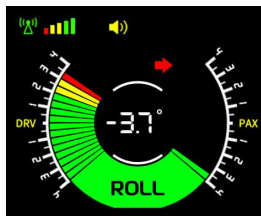
RV Mode Vehicle Roll Angle Display Area



Red arrow pointing left(DRV):
Tilt to the left



The green checkmark:
RV leveled



Red arrow pointing right(PAX):
Tilt to the right

RV Mode Vehicle Pitch Angle Display Area

Red arrow pointing REAR:
Tilt backward



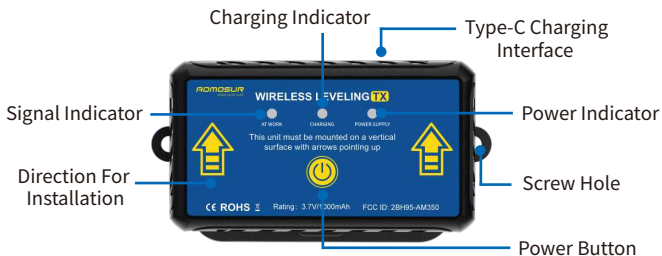
The green checkmark:
RV leveled



Red arrow pointing FRONT:
Tilt forward



Structure of the Transmitter



Disconnected



Charging



Power off



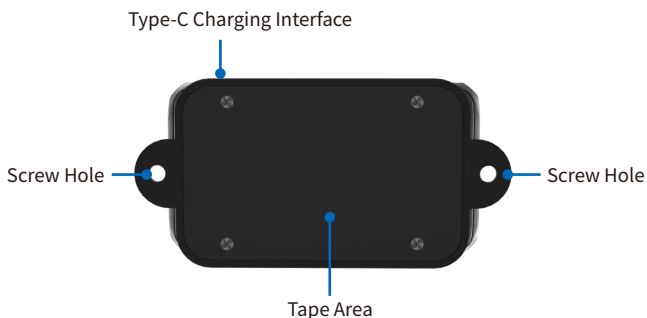
Connected



Charging complete



Power on



1. Display Parameters

Power Supply:	Lithium Battery 3.7V/DC11.5V~30V
Working current:	120mA ;
Power:	1.2W ;
Working temperature:	-20°C ~ 80°C;
RV mode pitch Angle:	0~4°
RV mode roll Angle:	0~4°
Off-road mode pitch Angle:	0~40°
Off-road roll Angle:	0~40°
Display Weight:	138g ;
Display Size:	127*60*25mm ;

2. Transmitter Parameters

Power Supply:	Lithium Battery 3.7V/TYPER-C:5V;
Operating Current:	13mA ;
Power (output):	0.8W ;
Operating Temperature:	-20°C ~ 80°C;
Transmitter Weight:	106g ;
Transmitter Size:	93.2(109)*52.4*19.7mm

FAQ

Q: How should I install the transmitter?

A: We recommend using screws for installation, or you can opt for double-sided tape.

Q: What should I do if the transmitter won't power on?

A: Connect the transmitter to a power supply using a Type C cable. The charging indicator light will show: no light means not charging, red indicates charging, and green means fully charged.

Q: How can I check the transmitter's power level?

A: Turn on both the transmitter and the display. The power level will be shown in the upper right corner of the display.

Q: What if the display indicates a signal disconnection?

A: First, ensure the transmitter is powered on (a red Power Supply indicator means it's on). If it is on, try turning off both the transmitter and the display, then power them back on after a few seconds.

Q: How do I charge the transmitter?

A: Use a Type C cable to connect the transmitter to a power bank or cell phone charger for charging.

After-sales service

Aftermarket Warranty

- ◆ The main unit is covered by a 1-year warranty from the date of purchase, while included accessories are warranted for 1 year from the date of receipt.

Warranty and Replacement Policy

- ◆ We will repair or replace equipment based on specific failures.
- ◆ All replacement parts, accessories, or equipment will be original and new.
- ◆ If a failure occurs within 90 days of purchase and you provide video and pictures, we will cover the shipping cost and provide free replacement accessories. For products purchased beyond 90 days, customers will be responsible for shipping costs, but we will still provide replacement accessories free of charge.

The following are not covered by the free warranty

- ◆ Products purchased through informal channels are not covered by this warranty.
- ◆ Damage resulting from improper use or maintenance contrary to the product manual is not covered.

We take pride in our exceptional design and customer service, and we're happy to offer additional support as needed.

Please Note

- ◆ Please be aware that we reserve the right to change product designs and specifications without prior notice. The actual product's appearance and color may differ from those shown in the manual. While we strive for accuracy in our descriptions, inaccuracies may occur. For any questions, please contact your dealer or our after-sales service center. The company holds the final interpretation of the product and is not liable for misunderstandings.

FCC Warning

This device complies with part 15 of the FCC Rules. Operation is subject to the following two conditions: (1) this device may not cause harmful interference, and (2) this device must accept any interference received, including interference that may cause undesired operation.

Any changes or modifications not expressly approved by the party responsible for compliance could void the user's authority to operate the equipment.

NOTE: This equipment has been tested and found to comply with the limits for a Class B digital device, pursuant to Part 15 of the FCC Rules. These limits are designed to provide reasonable protection against harmful interference in a residential installation. This equipment generates, uses and can radiate radio frequency energy and, if not installed and used in accordance with the instructions, may cause harmful interference to radio communications.

However, there is no guarantee that interference will not occur in a particular installation. If this equipment does cause harmful interference to radio or television reception,

which can be determined by turning the equipment off and on, the user is encouraged to try to correct the interference by one or more of the following measures:

- Reorient or relocate the receiving antenna.
- Increase the separation between the equipment and receiver.
- Connect the equipment into an outlet on a circuit different from that to which the receiver is connected.
- Consult the dealer or an experienced radio/TV technician for help.

To maintain compliance with FCC's RF Exposure guidelines, This equipment should be installed and operated with minimum 20cm distance between the radiator and your body: Use only the supplied antenna.

AOMOSUR Technology Co., Ltd

📍 527-1641 Lonsdale Ave
North Vancouver, BC
V7M 2J5
Canada

🌐 <http://www.aomosur.com>

✉ customer@aomosur.com

